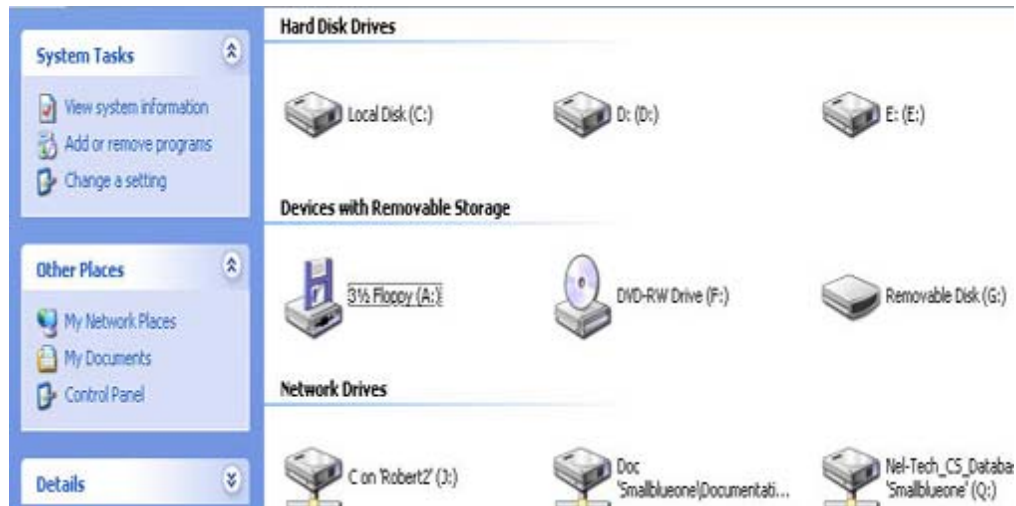
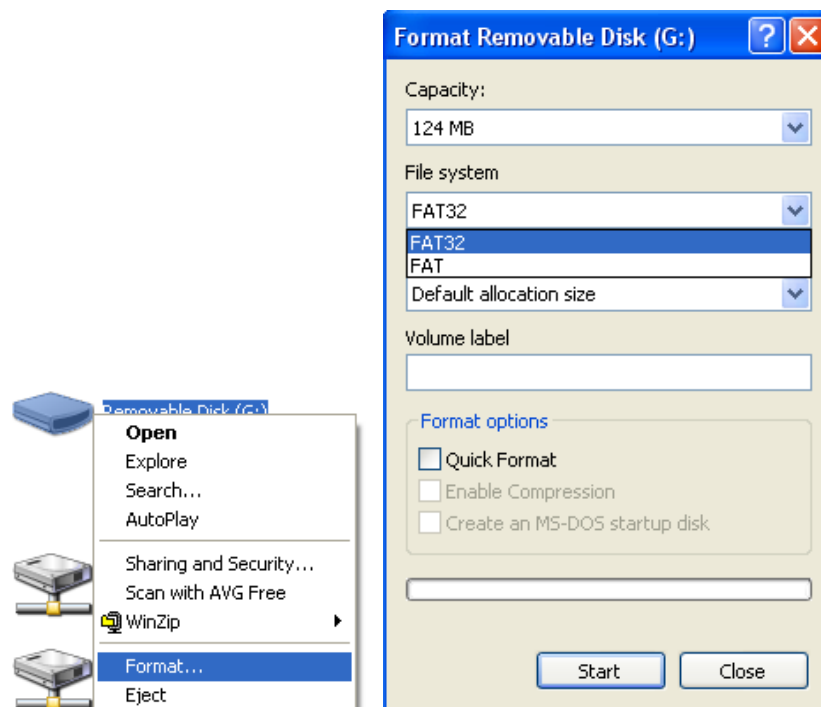


FORMATTING A MESSAGE MATE MP3 CARD

1. Insert the Message Mate MP3 card into the Messenger MP3.
2. With the Messenger MP3 plugged in, connect the USB cable from the Messenger MP3 to your PC and wait for Windows to recognize the Messenger MP3.
3. Once the Messenger MP3 is recognized, double click on the "My Computer" icon. Once open the window should look like this:



4. Look for the Removable Disk; in the case above, Windows has assigned it letter (G:)
5. Right click on the drive and select "Format" (see picture below):



5. Select "FAT" and click start.